



Child safety in cars: An observational study on the use of child restraint systems in the Netherlands

Maaïke Cornelissen, Mariëlle Hermans, Ellen Kemler
October 2019

veiligheid  nl

Index

- Introduction
- Methods
- Results
- Conclusion
- Materials



Introduction

- In 2017, 500 children (0-8 yrs) on Emergency Departments after car accident*
- New regulation since 2013
- In 2013: Observational study 0 - 4 yrs
73% transported unsafely
- In 2018: Observational study 0 - 8 yrs

*Dutch Injury Surveillance System (DISS), administrated by VeiligheidNL



Child safety in cars

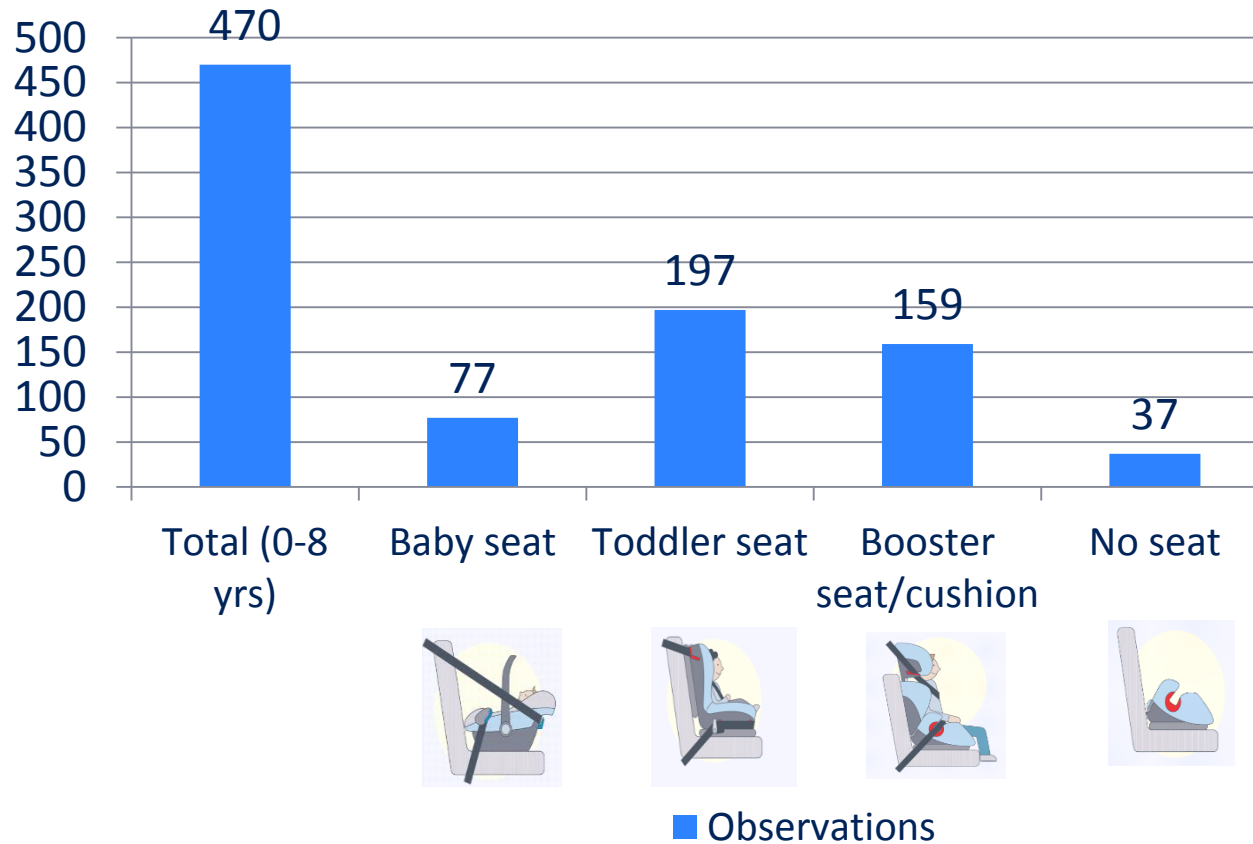
Method

- July and August 2018
- 9 parking lots
- Interview + observation (mis)use
- Definition of misuse
 - CRS inappropriate for child (length/weight)
 - CRS wrongly installed (different variables)
 - Child improperly restrained (different variables)



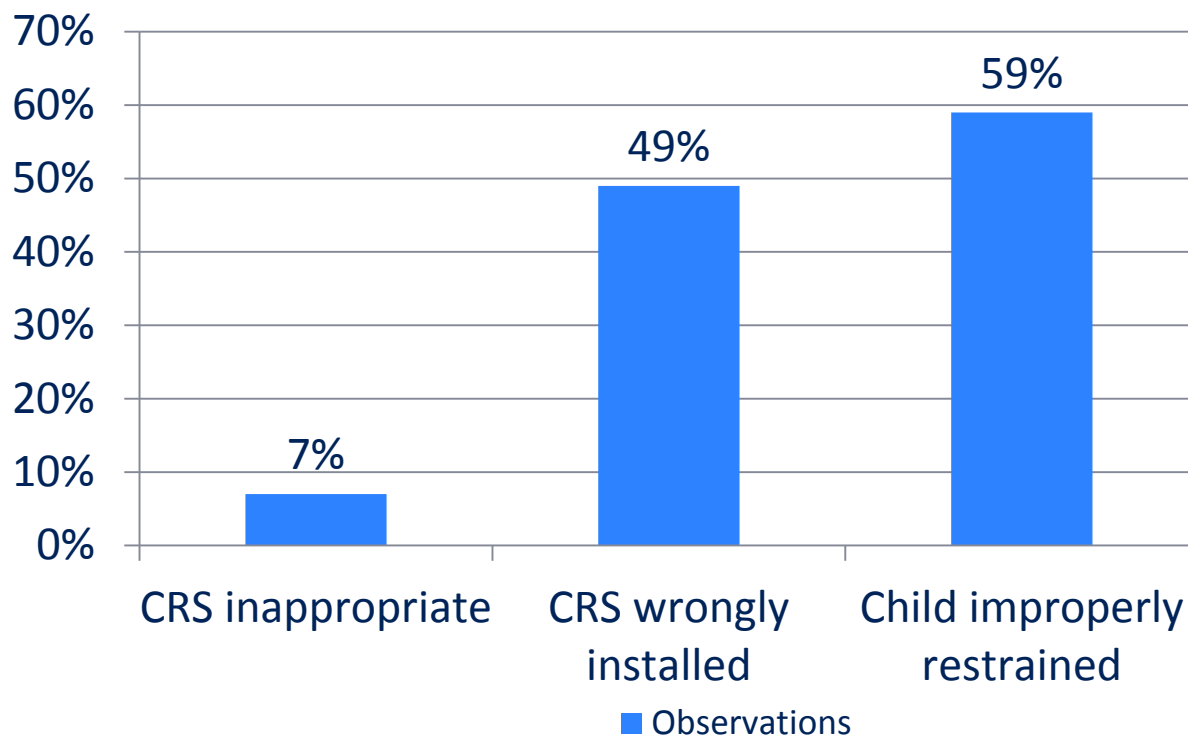
Child safety in cars

Results – total observations

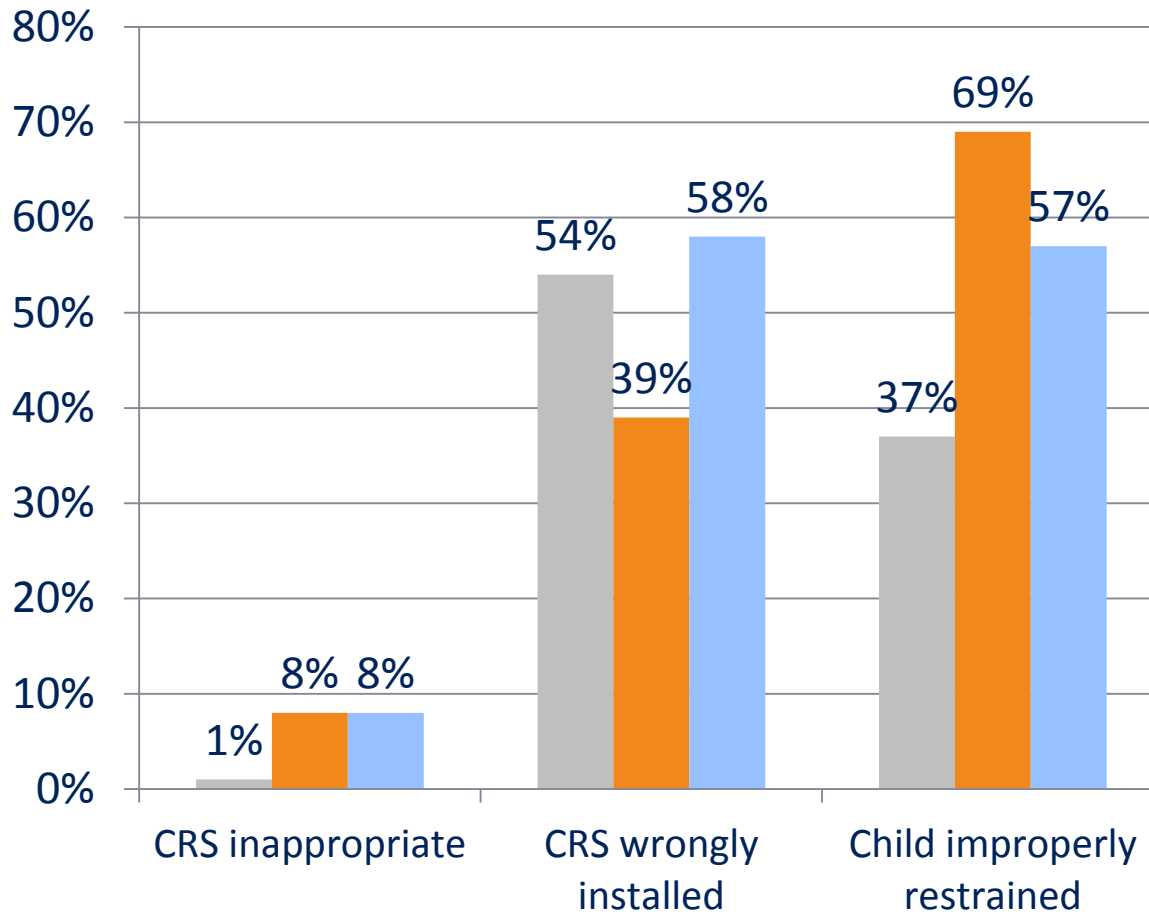


Results – total misuse

- 83% of the 470 children transported unsafely



Results – misuse for type seat



Results – additional

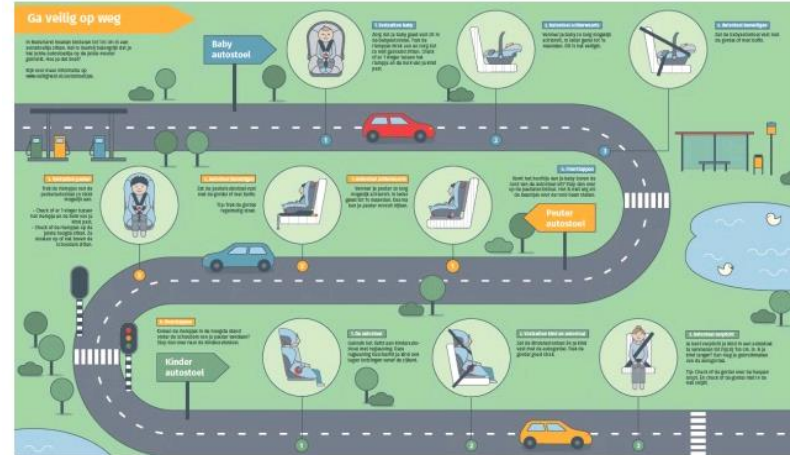
- No difference found in:
 - Gender
 - Age
 - Education
 - Minutes to location
 - Check instruction form
 - New/secondhand car seat
- But we found..
a higher chance of safe transportation when the driver was a parent

Conclusion

- 83% were not transported safely
- Mistakes in installing the CRS and restraining children.
- Information needed



Materials



Voor wie is de autostoel?

vraag 1 van 2

Een baby

0 t/m 14 mnd. | tot 13 kg | 40-83 cm

Een peuter

15 mnd. t/m 3 j. | 9 tot 18 kg | 60-105 cm

Een kind

4 t/m 10 j. | 15 tot 36 kg | 100-135 cm

Terug

Volgende

