



# Pedestrians treated at Dutch Emergency Departments an overview of road traffic injuries and fall injuries on public roads

Susanne Nijman, Inge Krul

Consumer Safety Institute, The Netherlands

veiligheid  nl

# Background

## Pedestrian:

A person walking along a public road

## Road traffic injuries:

- Occured or originated on a way or street open to public traffic
- At least one moving vehicle involved
- Do not include pedestrians who fall while walking on a public road (no collision with a moving vehicle)

## Why this study?

We suspect that there is a large group of pedestrians with fall injuries, where policy makers are not aware off



Road traffic  
accident



Road traffic  
accident



Road traffic  
accident



**NO** road traffic  
accident

# Research questions & Methods

## Two research questions:

- What are the prevalences of fall injuries and road traffic injuries among pedestrians?
- Are there differences in:
  - Characteristics of patients
  - Causes of injuries
  - Type and severity of injuries?

## Dutch Injury Surveillance System (DISS)

- Registration of injuries at EDs
- Representative, 14 of 87 EDs, 11% of visits
- Extrapolation to national figures
- Injuries/intoxications:
  - cause (home and leisure, work, sport, traffic, violence, self-harm) + reasons
- Annual upload to European Injury Database (IDB)



# Results: prevalence (2017)

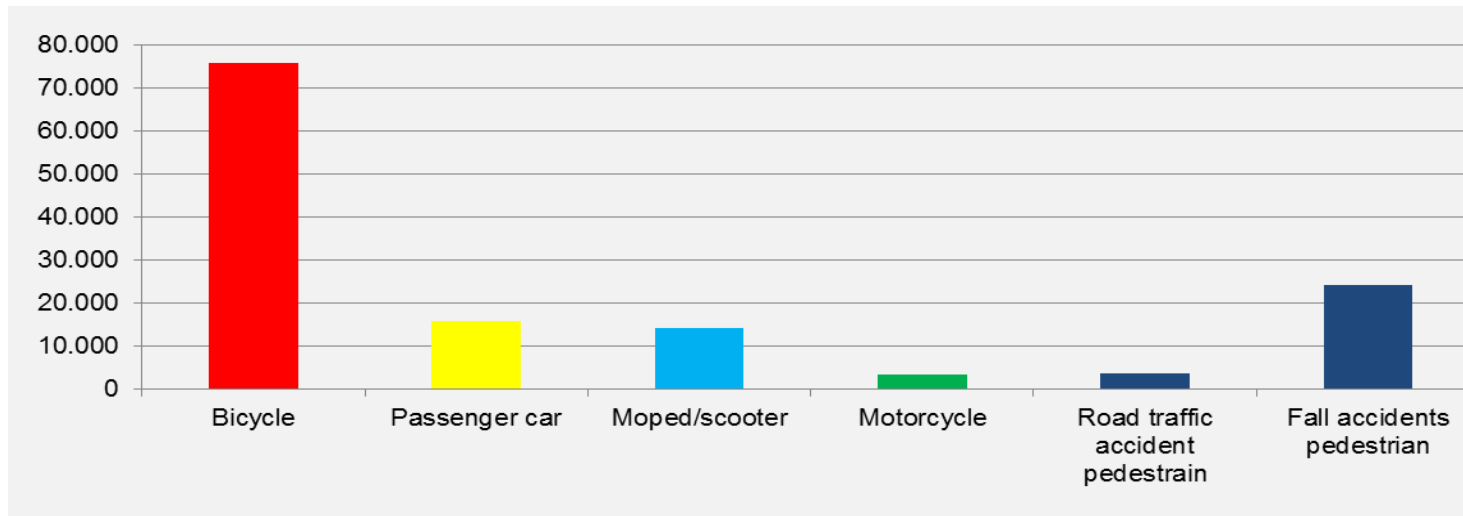
## Pedestrians with road traffic injuries:

- 3.600 ED treatments (95% CI 2.600 – 4.700)
- 3% of all injuries treated for road safety accidents

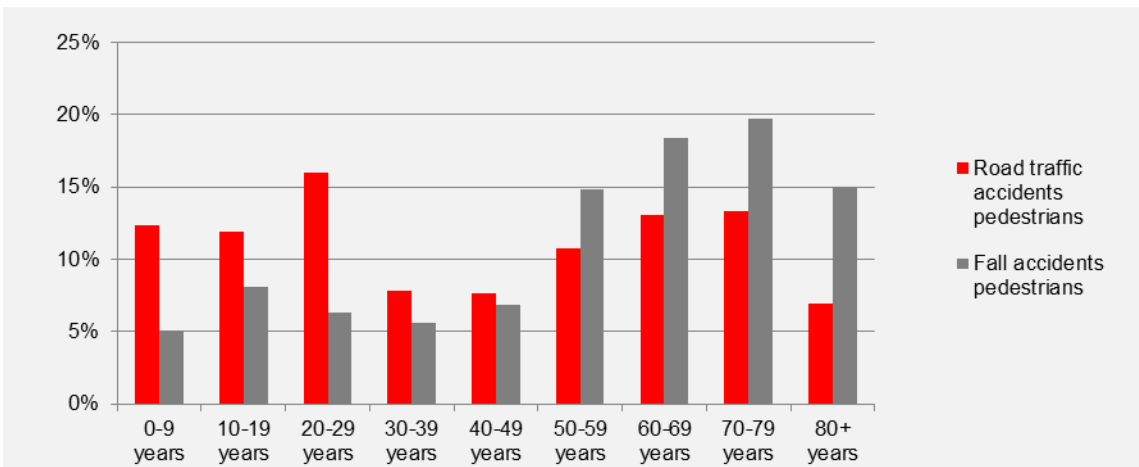
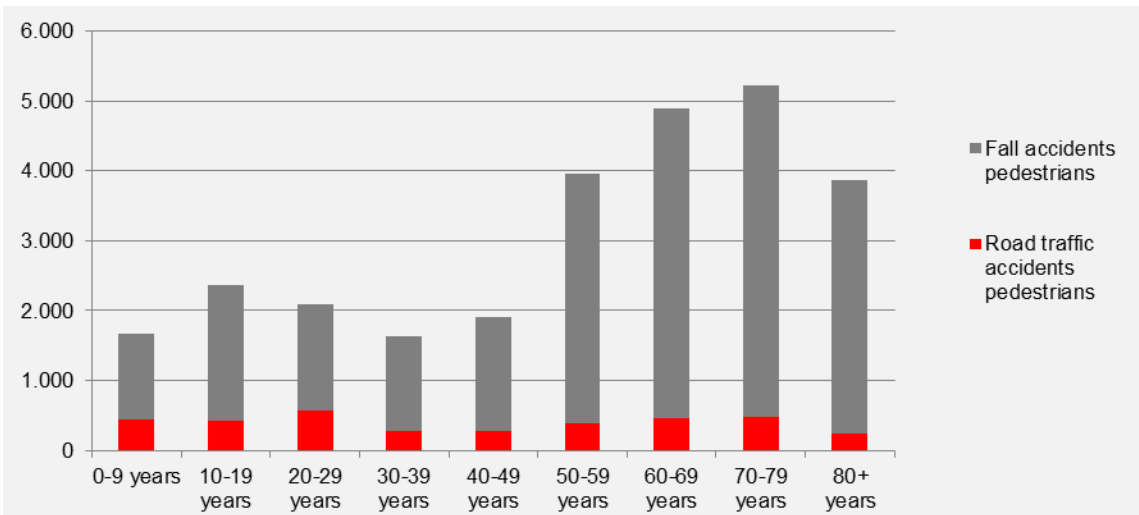


## Pedestrians with fall injuries:

- 24.000 ED treatments (95% CI 21.400 – 26.900)
- Outnumber more than six times pedestrians with road traffic injuries
- 10% of all fall injuries treated at Emergency Departments



# Results: age



outnumber



in every age group

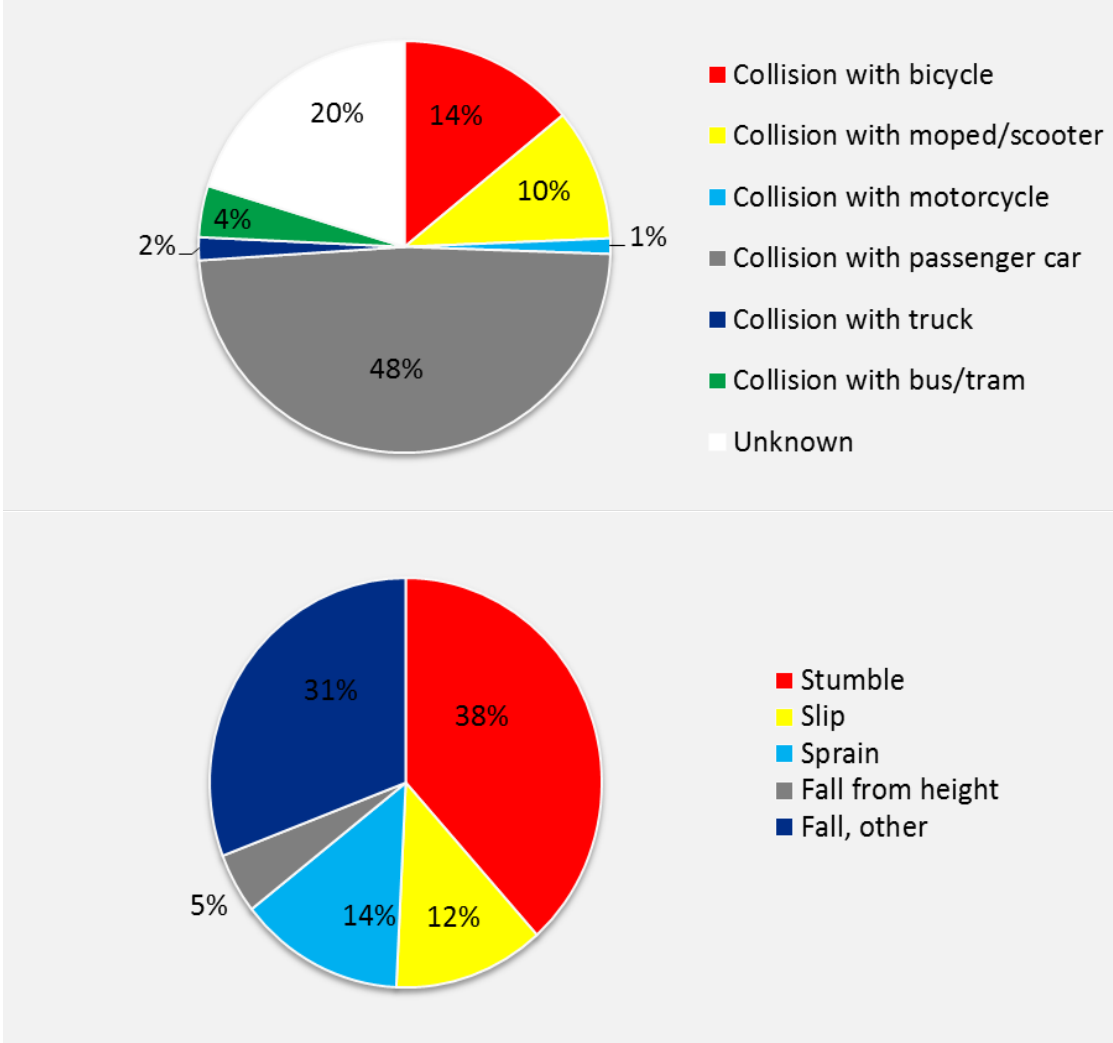


mean age: 42 y



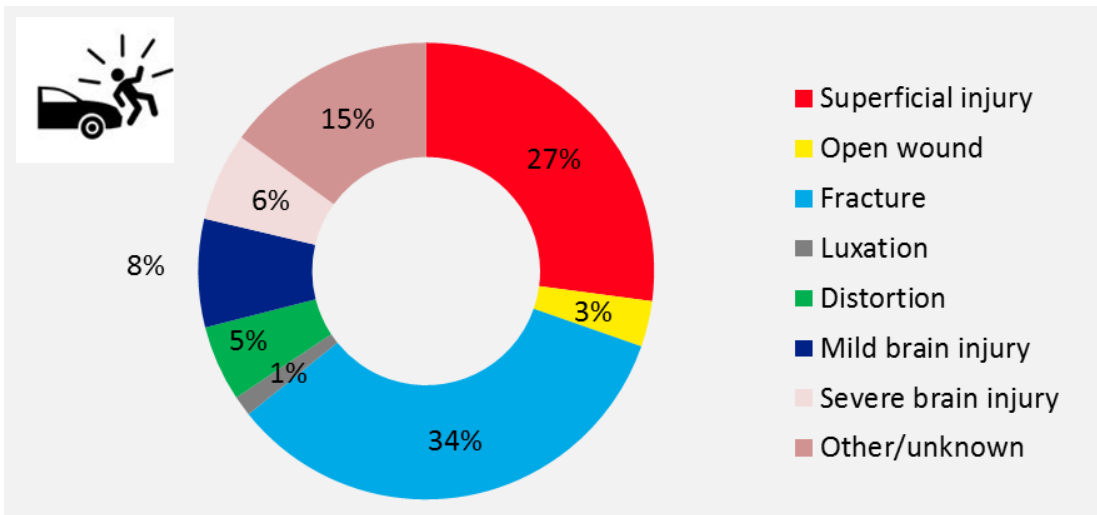
mean age: 55 y

# Results: cause of accident

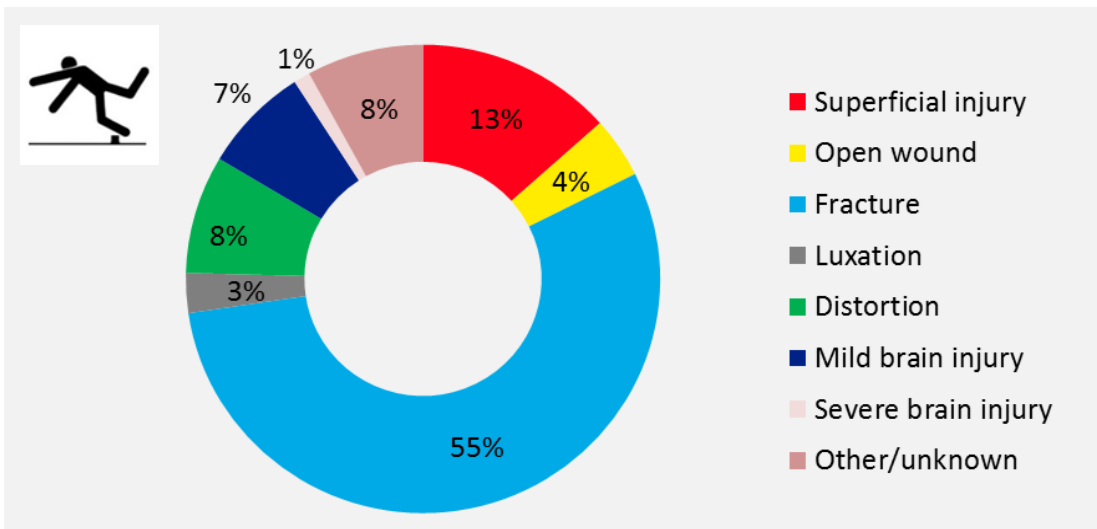


Source: Dutch Injury Surveillance System 2017, VeiligheidNL

# Results: type of injury



Severe (MAIS2+) injuries: 51%



Severe (MAIS2+) injuries: 61%

# Conclusion

## **Pedestrians with fall injuries:**

- Outnumber (more than 6 times!) pedestrians with road traffic injuries
- Outnumber car passengers with road traffic injuries
- Are mostly elderly
- More often have severe (MAIS2+) injuries than pedestrians with road traffic injuries
- Are not included in road traffic injury statistics
- Often lack attention of road safety policy makers

Missed opportunity for the safety of pedestrians!





## Questions / remarks:

Susanne Nijman [s.nijman@veiligheid.nl](mailto:s.nijman@veiligheid.nl)

Inge Krul [i.krul@veiligheid.nl](mailto:i.krul@veiligheid.nl)