



# SIGAPÉ - COMMUNITY BASED PROJECT TO PROMOTE SAFE WALKING TO SCHOOL

Liliana MADUREIRA<sup>1</sup> Mário ALVES,<sup>2</sup> Sandra NASCIMENTO,<sup>1</sup> Sandra ORNELAS,<sup>1</sup> Helena BOTTE,<sup>1</sup> Marta CARVALHO,<sup>2</sup> Luis ESCUDEIRO<sup>2</sup>

<sup>1</sup>) APSI - Associação para a Promoção da Segurança Infantil

<sup>2</sup>) ACAM - Associação de Cidadãos Auto-Mobilizados

## CHILDREN NO LONGER WALK TO SCHOOL ALONE!

Streets around schools were perceived as dangerous by families

Inadequate road infrastructures

Excessive traffic

Speed and abusive parking

problems

Goals

identify the main obstacles to healthier transport modes  
improve children autonomy, accessibility and safety in home - school trips

ACTIVE MODES  $\approx$  50% (PUBLIC SCHOOL)



BASIC SCHOOL  
(6 - 10 YEARS)

SANTA CLARA  
(PUBLIC SCHOOL)

CASTELO  
(PUBLIC SCHOOL)

VICTOR PALLA  
(PUBLIC SCHOOL)

VOZ DO OPERÁRIO  
(PRIVATE SCHOOL)

	WALKING	BICYCLING	BUS	CAR	OTHER
SANTA CLARA (PUBLIC SCHOOL)	47%	0%	7%	36%	7%
CASTELO (PUBLIC SCHOOL)	54%	0%	6%	21%	4%
VICTOR PALLA (PUBLIC SCHOOL)	51%	0%	5%	38%	5%
VOZ DO OPERÁRIO (PRIVATE SCHOOL)	6%	1%	1%	70%	12%

GO TO SCHOOL

ALONE



	WITH FAMILY ADULT	WITH COMMUNITY ADULT	WITH CHILDREN
SANTA CLARA (PUBLIC SCHOOL)	92%	4%	3%
CASTELO (PUBLIC SCHOOL)	96%	0%	0%
VICTOR PALLA (PUBLIC SCHOOL)	94%	2%	0%
VOZ DO OPERÁRIO (PRIVATE SCHOOL)	100%	0%	0%

## a) Mobility and walkability study of school routes; (kids)



Participant observation

walkability index



**SIGAPÉ**  
AUTOCARRO HUMANO

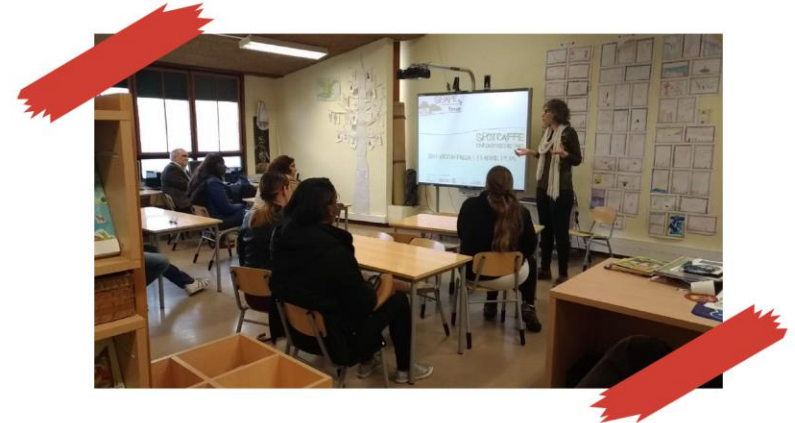
WE WENT TO STREET  
WITH KIDS TO STUDY THE PROBLEM



a) Mobility and walkability study of school routes; (parents)

## SOLVE THE PROBLEM REQUIRES ADULT INVOLVEMENT PARENTS / FAMILY FIRST

- MOBILITY AND WALKABILITY QUESTIONNAIRE "HOME - SCHOOL TRIPS"
- MEETINGS WITH PARENTS TO PRESENT THE RESULTS AND DISCUSS SOLUTIONS
- INTRODUCE THE WALKING BUS - "HUMAN BUS" AND AN APP TO HELP TO ORGANIZE VOLUNTEER AND CHILDREN'S GROUPS





# SIGAPÉ

AUTOCARRO HUMANO

PARENTS LIVE ISOLATED,  
IN BUILDINGS.  
THEY DON'T KNOW THEIR  
NEIGHBORS OR DON'T WANT  
TO DISTURB ANYONE.

WHEN THE SOLUTION FOR  
WALKING TO SCHOOL IS FORMAL, PARENTS  
ARE MORE COMFORTABLE JOINING US.

## b) Organising a Walking Bus



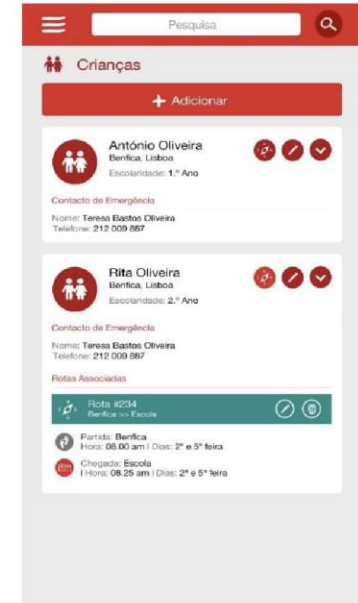
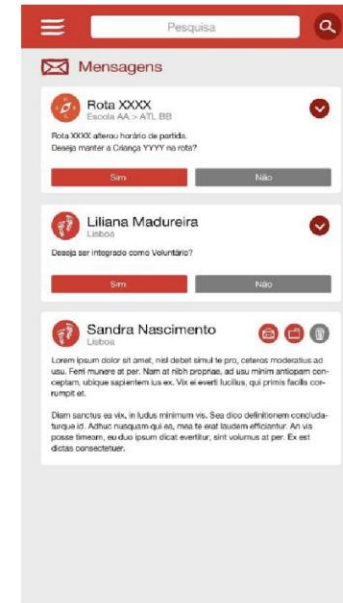
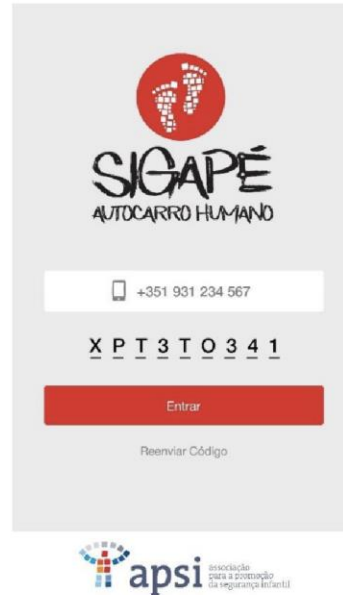
### ROTA SIGAPÉ Sta. Clara

- 8H30 Início Largo da Graça
- 8H45 Eb4 Voz do Operário
- 8H55 Eb4 Sta. Clara

BIG CHALLENGE  
VOLUNTEERS

## b) Organising a Walking Bus

ORGANIZING PEOPLE IS SO MUCH EASIER IF WE USE TECHNOLOGY



WE ARE DEVELOPING AN APP THAT LETS PEOPLE CREATE ROUTS, ENROLL KIDS AND VOLUNTEER DRIVERS.





c) Children lead Community Awareness Campaigns.

WALKING TO SCHOOL ALLOWS CHILDREN TO KNOW THE STREETS,  
IDENTIFY PROBLEMS, CLAIM FOR THEIR RESOLUTION

SO, WE DID (AND DO) AWARENESS CAMPAIGNS IN THE NEIGHBORHOOD



problems identified by children and materials created by them

WORKING  
IN

SPEED AND ABUSIVE PARKING ✓

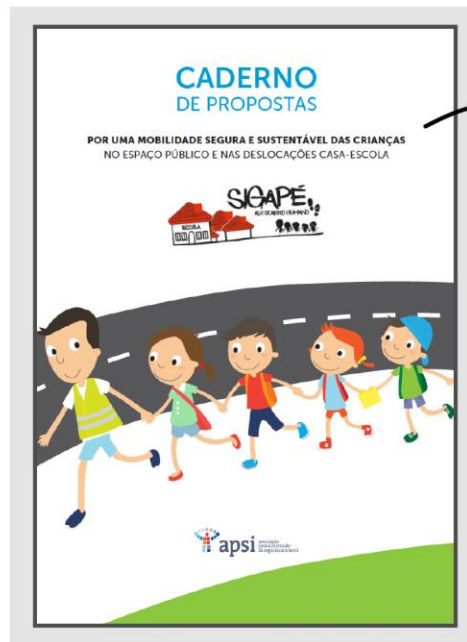
+ TRASH ON THE STREETS ✓

AND FOR OTHERS WHO CAN HELP SOLVING REMAINING PROBLEMS, WE MADE A PROPOSAL BOOK!

WORKING  
IN

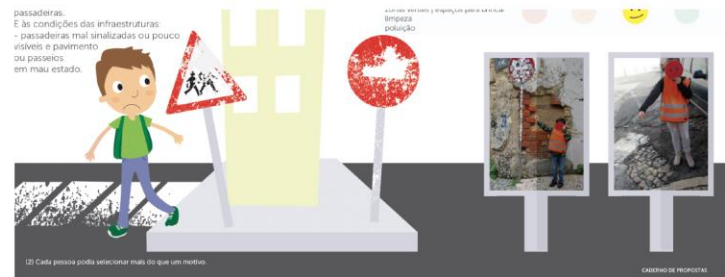


INADEQUATE ROAD INFRASTRUCTURES  
EXCESSIVE TRAFFIC ✓  
HIGH SPEED AND ABUSIVE PARKING ✓  
+ TRASH ON THE STREETS ✓



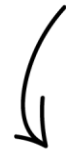
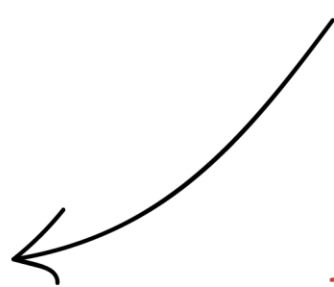
Recommendations for children safe and sustainable mobility in public space and home-school trips

for authorities, municipal council, village council...





# WE WANT CHILDREN IN CITY STREETS AGAIN SAFE WALKING AND PLAYING!



NEW PROJECT THAT CREATES  
COMMUNITY PLAY GROUPS  
IN GREEN SPACES NEAR SCHOOLS.



PARENTS WHO CAN'T GET  
THEIR CHILDREN FROM SCHOOL  
NOW HAVE A FREE, HUMANE  
AND HUMANIZED BUS THAT  
TAKES THEM.

THANK  
YOU 😊



FINANCIAL SUPPORT



BAIROS e ZONAS  
de Intervenção  
Prioritária de Lisboa

